

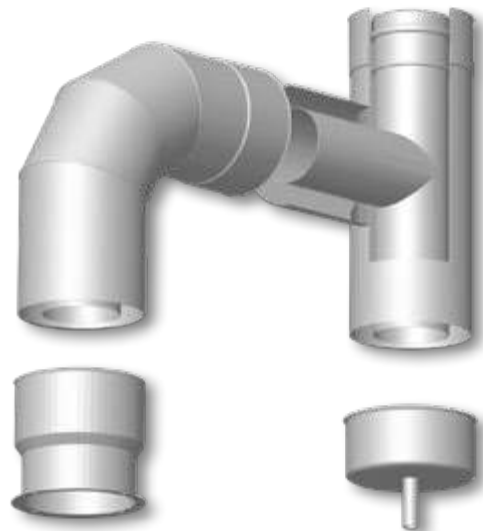
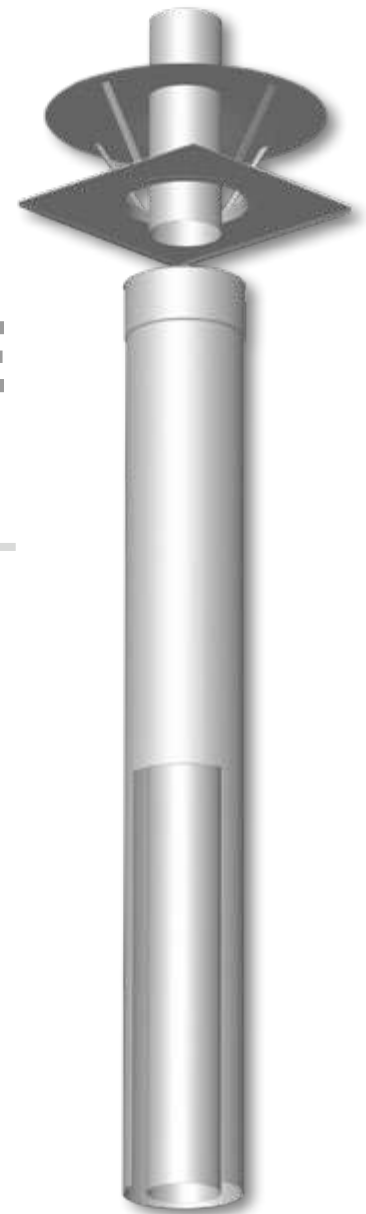
# POSITIVE PRESSURE CHIMNEYS

## CHIMNEYS TYPE WSPS

Sample marking of elements

WSPS EN 14989-2 T120 P1 W V<sub>m</sub> L30050 O100

Standard number	↓								
Maximum working temperature		↓							
Pressure class (N: negative pressure, P: positive pressure)			↓						
Resistance to condensate (W: wet; D: dry)				↓					
Resistance to corrosion according to type and thickness of material					↓				
Material specification (20-1.4301, 30-1.4307)						↓			
Thickness of material (0.XX mm)							↓		
Resistance to soot fire (G: yes; O: no), distance from flammable materials (500 mm)								↓	



# POSITIVE PRESSURE CHIMNEYS

## CHIMNEYS TYPE WSPS

Positive pressure combustion systems are intended to carry off exhaust flue gases from ventilation boilers with a closed combustion chamber, both condensation and non-condensation ones. Combustion systems may be configured as necessary from a number of typical components presented in the further part of the catalog.

KOMIN-FLEX offers basic types of components which may create:

- separate air-combustion systems type SPS
- individual exhaust flue gas discharge type SPS
- co-axial air-combustion systems type WSPS
- insulated system SPS

Co-axial air-combustion systems type WSPS, the so-called „pipe in a pipe“, consist of two ducts placed co-axially. The inner duct is used to carry off exhaust flue gases, while the space between the external jacket and the flue pipe is used to supply air for combustion.

The tightness of combustion components is guaranteed by specifically shaped seals. Seals are made from a special material resistant to the action of combustion products. Due to the applied solutions, the elements have tightness class P1, namely they may operate in positive pressure up to 200 Pa.

The elements of positive pressure combustion systems are manufactured from acid-proof steel. Depending on the needs, SPS and WSPS systems may be freely configured according to the requirements of the heating unit, keeping an appropriate inclination (fall) of the run of flue duct horizontal sections:

- for a condensation boiler with a closed combustion chamber inclination towards the boiler
- for a non-condensation boiler with a closed combustion chamber inclination opposite to the boiler. Due to special adaptation elements, the systems may be used with heating units from the majority of manufacturers offering their products on our market.

SPS and WSPS systems as well as positive pressure chimney liners are also used for multi-connection systems, e.g. collective air-combustion systems in high-rise buildings (the so-called LAS system) or a cascade connection of numerous boilers cooperating within one boiler station. A condenser should be used in the lowest point of the duct. Such solutions are designed each time by our technical office with the user.

KOMIN-FLEX also offers typical solutions for exhaust flue gas discharge, air intakes or outlets and roof passages.

Positive pressure chimneys comply with the following European standards: EN 1856-2 and EN 14989-2. The production of all positive pressure elements is covered by a system of factory production control, certificate No 1020-CPD-070038635 and 1020-CPD-070038639 (TZUS Praga). KOMIN-FLEX has implemented and maintains a quality management system compliant with the requirements of the standard EN ISO 9001:2015 certified by TZUS Praga.

Chimneys by KOMIN-FLEX have received a positive opinion and are recommended by the professional association of Polish chimney sweeps.

Sample adapter solutions- structure depending on boiler type

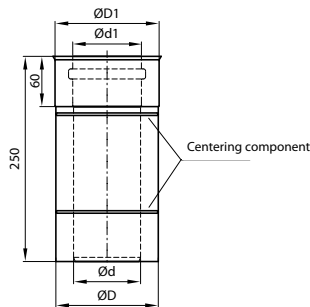
adapter G 60/100



adapter H 60/100 to 80/125

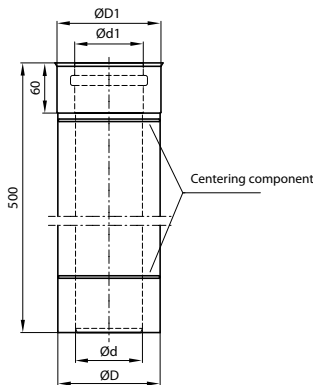


adapter G 60/100 to 80/125



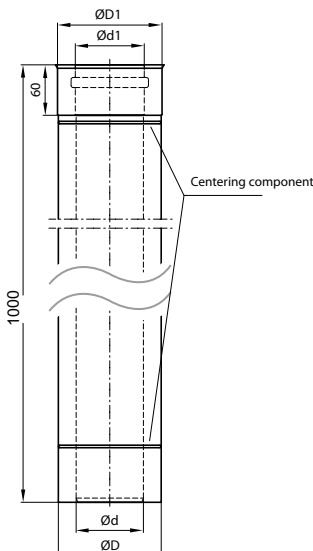
PIPE 0,25 m

trade diam.	60	100	80	125	100	150
d	60		80		100	
d1	62		82		102	
D	100		122		150	
D1	102		124		152	



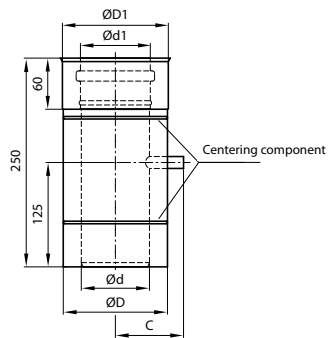
PIPE 0,5 m

trade diam.	60	100	80	125	100	150
d	60		80		100	
d1	62		82		102	
D	100		122		150	
D1	102		124		152	

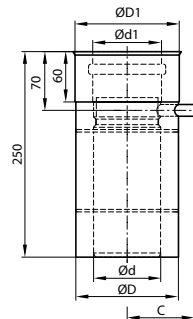


PIPE 1 m

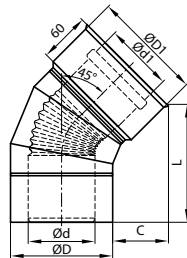
trade diam.	60	100	80	125	100	150
d	60		80		100	
d1	62		82		102	
D	100		122		150	
D1	102		124		152	


**PIPE 0,25 m WITH MEASURE NOZZLE**

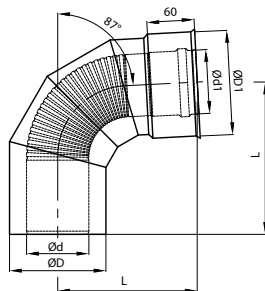
trade diam.	60	100	80	125	100	150
<b>d</b>	-	-	80	-	100	-
<b>d1</b>	-	-	82	-	102	-
<b>D</b>	-	-	122	-	150	-
<b>D1</b>	-	-	124	-	152	-
<b>C</b>	-	-	70	-	85	-


**PIPE 0,25 m WITH CONDENSER**

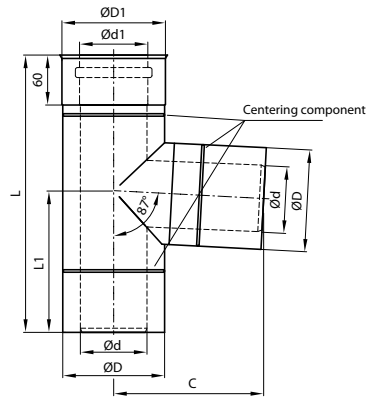
trade diam.	60	100	80	125	100	150
<b>d</b>	-	-	80	-	100	-
<b>d1</b>	-	-	82	-	102	-
<b>D</b>	-	-	122	-	150	-
<b>D1</b>	-	-	124	-	152	-
<b>C</b>	-	-	70	-	85	-


**ELBOW 45°**

trade diam.	60	100	80	125	100	150
<b>d</b>	60	-	80	-	100	-
<b>d1</b>	62	-	82	-	102	-
<b>D</b>	100	-	122	-	150	-
<b>D1</b>	102	-	124	-	152	-
<b>L</b>	130	-	155	-	163	-
<b>C</b>	52	-	60	-	67	-

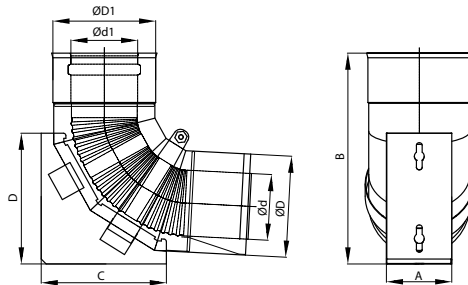

**ELBOW 87°**

trade diam.	60	100	80	125	100	150
<b>d</b>	60	-	80	-	100	-
<b>d1</b>	62	-	82	-	102	-
<b>D</b>	100	-	122	-	150	-
<b>D1</b>	102	-	124	-	152	-
<b>L</b>	150	-	180	-	215	-



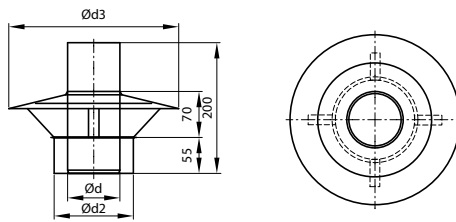
TEE 87°

trade diam.	60	100	80	125	100	150
d	60		80		100	
d1	62		82		102	
D	100		122		150	
D1	102		124		152	
L	245		333		333	
L1	125		167		167	
C	120		180		180	



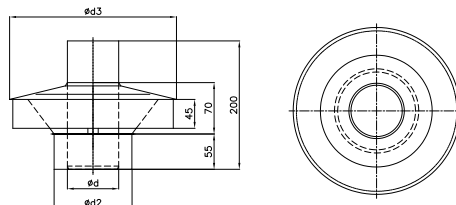
ELBOW 87° WITH SUPPORT

trade diam.	60	100	80	125	100	150
d	60		80		100	
d1	62		82		102	
D	100		122		150	
D1	102		124		152	
A	60		80		100	
B	210		260		300	
C	125		150		190	
D	130		160		200	



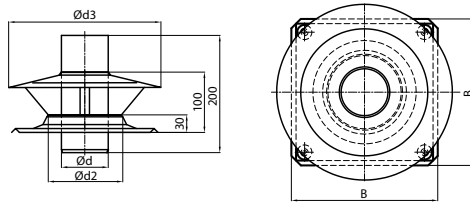
VENTILATED CHIMNEY CAP

trade diam.	60	100	80	125	100	150
d	60		80		100	
d2	100		120		150	
d3	245		245		380	



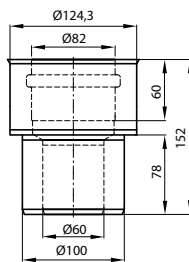
VENTILATED CHIMNEY CAP 2

trade diam.	60	100	80	125	100	150
d	60		80		100	
d2	100		120		150	
d3	245		245		380	



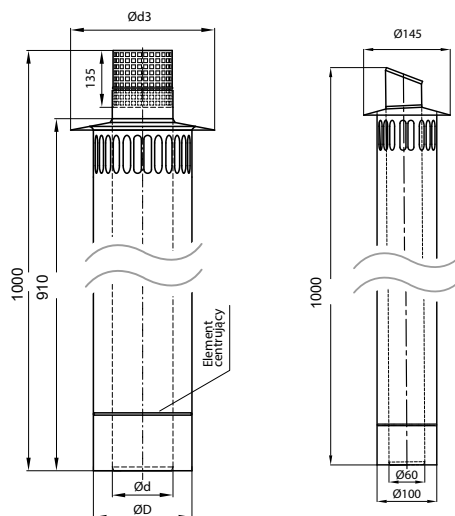
### VENTILATED ROOF PASSAGE

trade diam.	60	100	80	125	100	150
<b>d</b>	60		80		100	
<b>d2</b>	100		125		150	
<b>d3</b>	245		245		380	
<b>B</b>	250		250		300	



### REDUCTION PIECE

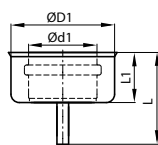
trade diam.	60	100	80	125	100	150



### SIDE OUTLET

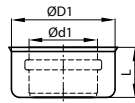
trade diam.	60	100	80	125	100	150
<b>D</b>	100		122		150	
<b>d</b>	60		80		100	
<b>d3</b>	145		170		300	

\* made only in a truncated version of the outlet



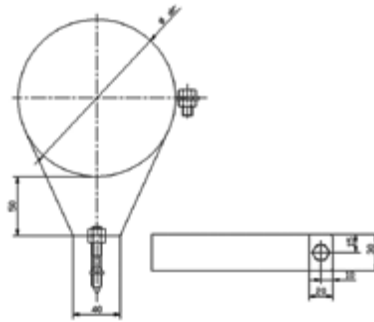
### BOTTOM

trade diam.	60	100	80	125	100	150
<b>d1</b>	62		82		102	
<b>D1</b>	82		124		152	
<b>L</b>	100		85		85	
<b>L1</b>	60		60		60	



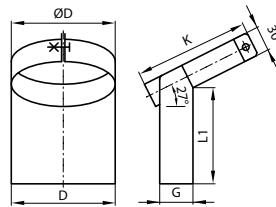
INSPECTION COVER

trade diam.	60	100	80	125	100	150
<b>d1</b>	62		82		102	
<b>D1</b>	102		124		152	
<b>L</b>	55		55		55	



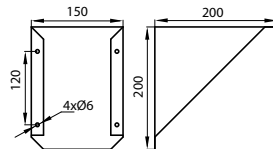
PIPE FASTENING CLAMP

trade diam.	60	100	80	125	100	150
-------------	----	-----	----	-----	-----	-----



SUPPORT CLAMP

trade diam.	60	100	80	125	100	150
<b>D</b>	100		125		150	
<b>L1</b>	105		135		150	
<b>K</b>	115		143		150	
<b>G</b>	30		40		40	



SUPPORT CONSOLE

trade diam.	60	100	80	125	100
-------------	----	-----	----	-----	-----