

POSITIVE PRESSURE CHIMNEYS

CHIMNEY LINERS TYPE SPS

SPS EN 1856-2 T120 P1 W V_m L30050 O500

Standard number	↓								
Maximum working temperature		↓							
Pressure class (N: negative pressure, P: positive pressure)			↓						
Resistance to condensate (W: wet; D: dry)				↓					
Resistance to corrosion according to type and thickness of material					↓				
Material specification (20-1.4301, 30-1.4307)						↓			
Thickness of material (0.XX mm)							↓		
Resistance to soot fire (G: yes; O: no), distance from flammable materials (500 mm)								↓	



POSITIVE PRESSURE CHIMNEYS

CHIMNEY LINERS TYPE SPS

SPS chimney liners consist of separate smoke discharge pipes from condensing devices and separate pipes for supplying the combustion chamber with air.

Separate SPS smoke/air systems consist of two separate pipes, i.e. for discharging smoke and supplying air for combustion.

The tightness of the smoke elements is ensured thanks to specially shaped gaskets. The seal is made of a material that is resistant to combustion products. Thanks to the applied solutions, the elements have the P1 air-tightness class, meaning that they can operate at a positive pressure of up to 200 Pa.

Positive pressure chimney elements are manufactured with the use of acid-resistant steel. Thanks to its properties, it protects the liner as well as the entire chimney against the aggressive effect of acidic condensate generated during the combustion process. The precisely constructed elements and the socket connection system (muff – 60mm) guarantee simple assembly and high rigidity of the structure. Depending on the needs, the WSPS and SPS systems can be combined in any configuration, in accordance with the requirements of the heating device, while maintaining the proper angle of the horizontal sections of smoke pipes.

Positive pressure chimneys comply with the following European standards: EN 1856-2 and EN 14989-2. The production of all positive pressure elements is covered by a system of factory production control, certificate No 1020-CPD-070038635 and 1020-CPD-070038639 (TZUS Praga). KOMIN-FLEX has implemented and maintains a quality management system compliant with the requirements of the standard EN ISO 9001:2015 certified by TZUS Praga.

Chimneys by KOMIN-FLEX have received a positive opinion and are recommended by the professional association of Polish chimney sweeps.

Sample adapter solutions- structure depending on boiler type

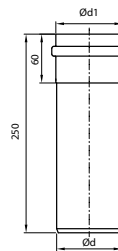
adapter F1 60/80



adapter F1 80

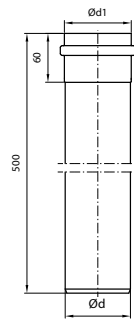


adapter A 60/100



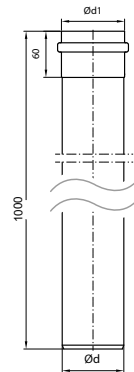
PIPE 0,25 m

trade diam.	60	80	100
d	60	80	100
d1	62	82	102



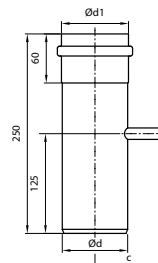
PIPE 0,5 m

trade diam.	60	80	100
d	60	80	100
d1	62	82	102



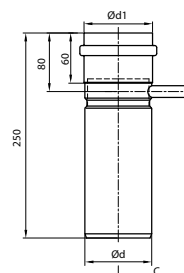
PIPE 1 m

trade diam.	60	80	100
d	60	80	100
d1	62	82	102



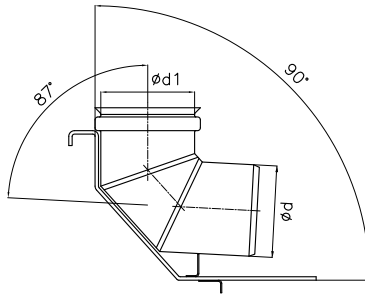
PIPE 0,25 m WITH MEASURE NOZZLE

trade diam.	60	80	100
d	-	80	100
d1	-	82	102
C	-	75	85



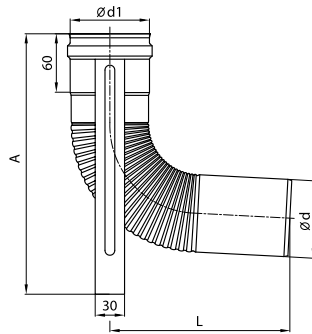
PIPE 0,25 m WITH CONDENSER

trade diam.	60	80	100
d	-	80	100
d1	-	82	102
C	-	75	85



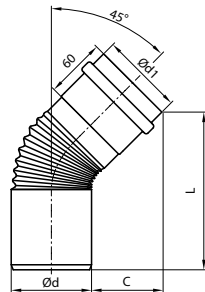
REPAIR ELBOW

trade diam.	80
d	80
d1	82



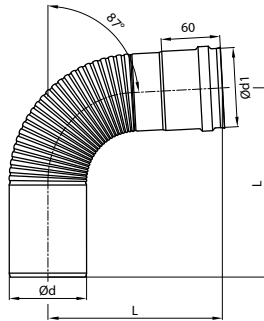
ELBOW 87° WITH SUPPORT

trade diam.	60	80	100
d	60	80	100
d1	62	82	102
A	205	265	295
L	150	180	215



ELBOW 45° CORRUGATED

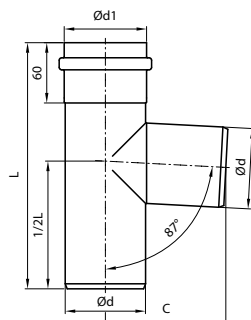
trade diam.	60	80	100
d	60	80	100
d1	62	82	102
C	60	77	83
L	140	177	187



ELBOW 87° CORRUGATED *

trade diam.	60	80	100
d	60	80	100
d1	62	82	102
L	150	180	215

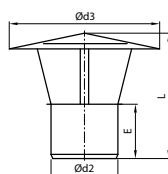
* Solutions typical of condensation boilers. Individual solutions adapted to a given system are recommended for turbo boilers.



ELBOW 87° *

trade diam.	60	80	100
d	60	80	100
d1	62	82	102
C	100	120	130
L	245	245	250

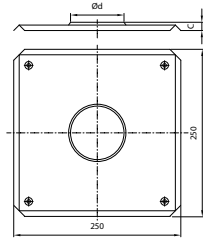
* Solutions typical of condensation boilers. Individual solutions adapted to a given system are recommended for turbo boilers.



CHIMNEY CAP

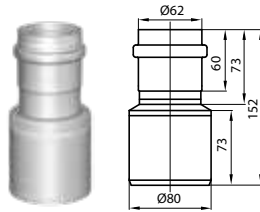
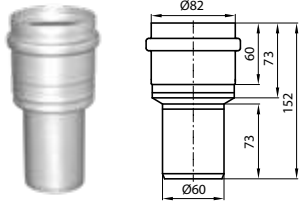
trade diam.	60	80	100
d2	58	78	98
d3	170	190	190
L	120	150	150
E	45	65	60

New quality



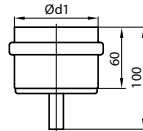
ROOF PASSAGE

trade diam.	60	80	100
d	60	80	100
C	10	28	25



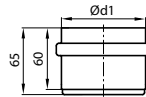
REDUCTION PIECE

trade diam.	60	80	100
-------------	----	----	-----



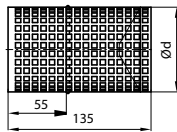
BOTTOM

trade diam.	60	80	100
d1	62	82	102



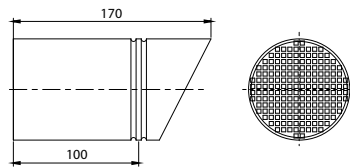
INSPECTION COVER

trade diam.	60	80	100
d1	62	82	102



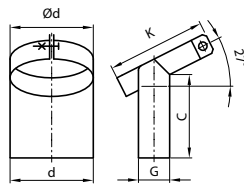
INLET/OUTLET GRATE

trade diam.	-	80	100
-------------	---	----	-----



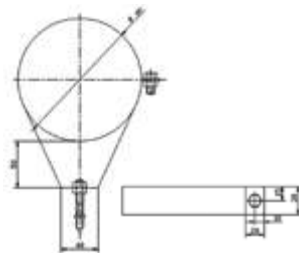
INTAKE

inlet/outlet	60	80	100
--------------	----	----	-----



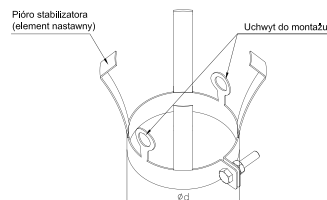
SUPPORT CLAMP

trade diam.	60	80	100
d	60	80	100
C	65	80	100
K	85	95	110
G	20	30	30



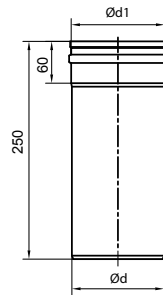
PIPE FASTENING CLAMP

trade diam.	60	80	100
-------------	----	----	-----



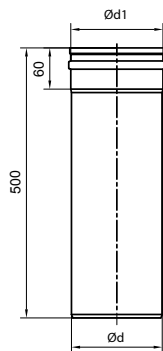
STABILIZING-MOUNTING ELEMENT

trade diam.	60	80	100
d	60	80	100



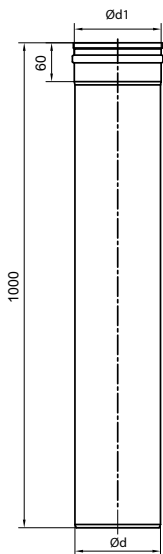
PIPE 0,25 m

trade diam.	120	130	150	180	200	225	250	300
d	122	123	152	180	201	226	251	300
d1	124	134	154	182	203	228	253	302



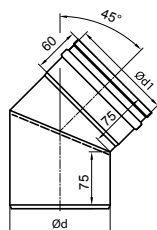
PIPE 0,5 m

trade diam.	120	130	150	180	200	225	250	300
d	122	123	152	180	201	226	251	300
d1	124	134	154	182	203	228	253	302



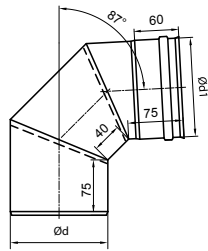
PIPE 1 m

trade diam.	120	130	150	180	200	225	250	300
d	122	123	152	180	201	226	251	300
d1	124	134	154	182	203	228	253	302



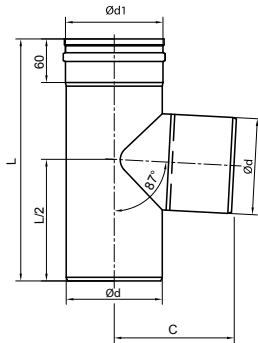
ELBOW 45°

trade diam.	120	130	150	180	200	225	250	300
execution	3 segments			2 segments				
d	122	123	152	180	201	226	251	300
d1	124	134	154	182	203	228	253	302



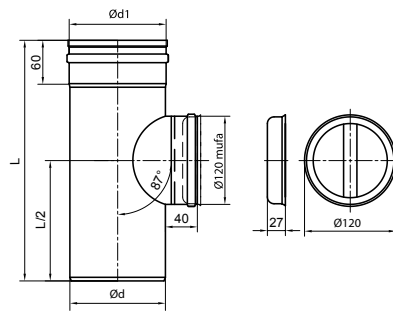
ELBOW 87°

trade diam.	120	130	150	180	200	225	250	300
execution	4 segments				3 segments			
d	122	123	152	180	201	226	251	300
d1	124	134	154	182	203	228	253	302



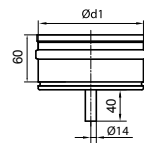
TEE 87°

trade diam.	120	130	150	180	200	225	250	300
d	122	123	152	180	201	226	251	300
d1	124	134	154	182	203	228	253	302
C	160	165	175	210	220	232,5	255	280
L	333	333	400	450	450	500	500	550



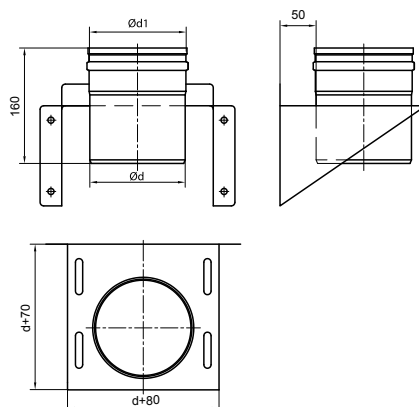
INSPECTION TEE

trade diam.	120	130	150	180	200	225	250	300
d	122	123	152	180	201	226	251	300
d1	124	134	154	182	203	228	253	302
L	333	333	333	333	333	333	333	333



BOTTOM

trade diam.	120	130	150	180	200	225	250	300
d1	124	134	154	182	203	228	253	302



CONSOLE PLATE

trade diam.	120	130	150	180	200	225	250	300
d	122	123	152	180	201	226	251	300
d1	124	134	154	182	203	228	253	302